



80th AYC ANNUAL REGATTA

11 June 2016

Organizing Authority (OA): Annapolis Yacht Club
Annapolis, Maryland, USA

Event Website: www.annapolisyc.com/racing

This year, we will have two courses that make up the AYC Annual Regatta. Each course has a separate Notice of Race **that is included in the following pages** of this document.

For one-design boats (J/105, J/80, J/70, J/30, and J/22), please see the Notice of Race for the One-Design Course.

For all ratings boats (PHRF, Shorthanded and Cruising), please see the Notice of Race for Fixed Marks Course.



80th AYC ANNUAL REGATTA

Fixed Marks Course

11 June 2016

Organizing Authority (OA): Annapolis Yacht Club
Annapolis, Maryland, USA
Event Website: www.annapolisyc.com/racing

NOTICE OF RACE **with Amendment 2**

1 RULES

- 1.1 The regatta will be governed by the rules as defined in The Racing Rules of Sailing (RRS).
- 1.2 Rules of the Chesapeake Shorthanded Sailing Society will apply to Shorthanded classes. (Available at www.chbaysss.org).

2 ADVERTISING

Boats will not be required to display advertising chosen and supplied by the organizing authority.

3 ELIGIBILITY

- 3.1 The Fixed Mark Course of this regatta is open to boats of the following classes: PHRF A0/A1, PHRF A2, PHRF B, PHRF C, Shorthanded Spinnaker, Shorthanded Non-spinnaker, Cruising Spinnaker, and Cruising Non-spinnaker.
- 3.2 **Shorthanded classes are subject to CHESSS class rule 3, Crew Limits, which states: "All vessels are limited to a maximum of 2 actively participating crew. One nonparticipating person up to 12 years of age or one CHESSS Board approved non-participant may be aboard during racing."**
- 3.3 The Cruising classes are intended for cruising and performance cruising boats who are not currently active racers. The organizing authority has the sole discretion to accept entries in the Cruising classes. If the OA rejects an entry for the cruising class, that boat may still enter a PHRF class.
- 3.2 Each boat in the above classes must have a valid 2016 PHRF of the Chesapeake 4P rating.
- 3.3 Any class that does not have a minimum of 6 entries by 1700 on 9 June 2016 will not be eligible for a start and the entry fees will be returned.

4 CLASSIFICATION

There will be no sailor classification requirements beyond those stated in applicable class rules.

5 FEES AND ENTRY

- 5.1 Registration and entry fee of \$55.00 is due by 1700 on 9 June 2016. Entry fees paid before 1700 on 26 May 2016 will be discounted to \$45.00. Entry fees are non-refundable.
- 5.2 Boats wishing to enter shall register on line at www.annapolisyc.com/racing.
- 5.3 The entry fee includes racing and the awards ceremony after racing at the AYC Sailing Center.
- 5.4 To be considered an entry in the regatta, a boat shall complete all registration steps and pay all fees.

6 SCHEDULE

- 6.1 The event schedule will be:

Time	
1100	First Warning Signal
1105	Start – Shorthanded Non-Spinnaker
1110	Start – Cruising Non-spinnaker
1115	Start – Shorthanded Spinnaker
1120	Start – Cruising Spinnaker

1125	Start – PHRF C
1130	Start – PHRF B
1140	Start – PHRF A2
1150	Start – PHRF A0/A1
1630	Time limit
After Racing	Competitor's party and awards presentation with complementary beer at AYC Sailing Center

6.2 One race is scheduled for each class.

7 MEASUREMENT AND INSPECTION

No pre-regatta measurements or inspections will be required.

8 SAILING INSTRUCTIONS

Sailing instructions will be available by 1700 on Tuesday, 7 June 2016. They will be posted on the event website.

9 VENUE

9.1 Attachment 1 shows the racing area and course options

9.2 Attachment V shows the layout of the regatta venue.

10 THE COURSES

10.1 The course will be one of the fixed government marks courses between 10 and 20 nautical miles in length as shown in Attachment 1.

10.2 Prior to the warning signal for the first race of the day, the race committee will display which course is to be sailed.

10.3 Important additional information, including the direction in which the course is to be sailed, will be included in the sailing instructions.

11 PENALTY SYSTEM

11.1 Penalties while racing: RRS 44.1, One-Turn and Two-Turns Penalties will apply.

11.2 Penalties after racing: RRS/US Appendix T, Section B (Post-Race Penalties) will apply.

12 SCORING

12.1 RRS Appendix A4, Low Point System, will apply.

12.2 One race is required to be completed to constitute a series.

12.3 Corrected times will be calculated using PHRF Time-on-Time scoring. A boat's corrected time will be her elapsed time multiplied by $(A / (B + \text{Phrf Rating}))$. The A and B factors will be posted on the notice board by 1700 on Friday, June 9, 2016. A general description of PHRF time-on-time scoring can be found at: <http://www.ussailing.org/racing/offshore-big-boats/phrf/time-on-time-scoring/>.

13 HAUL-OUT RESTRICTIONS

There will be no restrictions on haul-out.

14 RADIO COMMUNICATION

The race committee intends to make courtesy broadcasts to competitors on VHF radio. The specific channel will be stated in the sailing instructions.

15 PRIZES

15.1 Prizes will be given for 1st, 2nd, and 3rd place in each class.

15.2 Additional prizes may be awarded at the discretion of the organizing authority.

16 DISCLAIMER OF LIABILITY

Competitors participate in the regatta entirely at their own risk. See rule 4, Decision to Race. The organizing authority will not accept any liability for material damage or personal injury or death sustained in conjunction with or prior to, during, or after the regatta.

17 INSURANCE

Each participating boat shall be insured with valid third-party liability insurance with a minimum coverage of \$US 300,000 per event or the equivalent.

18 FURTHER INFORMATION

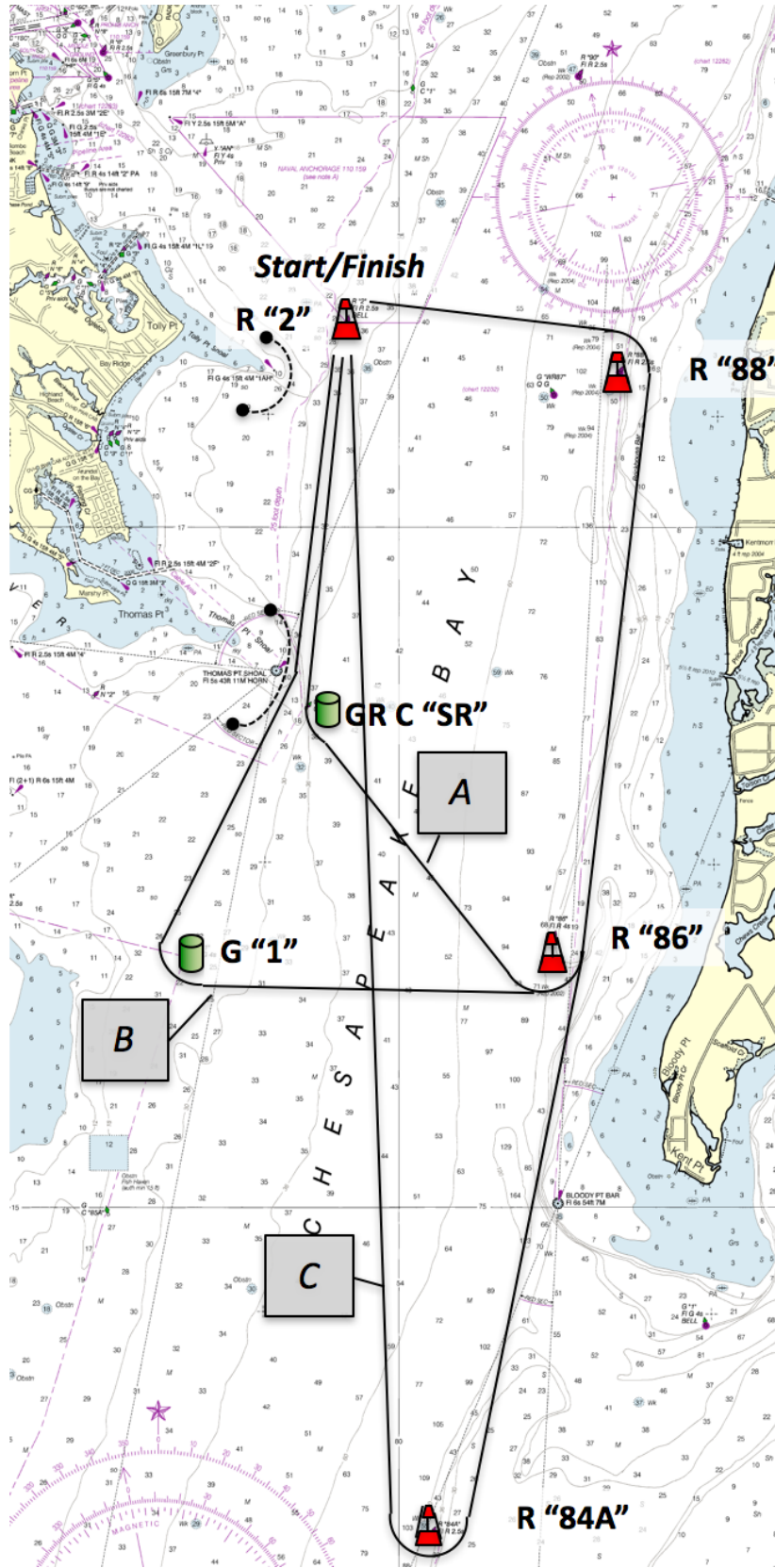
18.1 Guest privileges can be established on registration.

18.2 For more information contact:

AYC Regatta Manager: Linda Ambrose, lambrose@annapolisyc.org, 410.858.4964

Event Chair: Craig & Dotty Saunders, dottysaunders@verizon.net, (410) 570-0520

ATTACHMENT 1 - RACE AREA and COURSES





80th AYC ANNUAL REGATTA

One Design Course

11 June 2016

Organizing Authority: Annapolis Yacht Club
Annapolis, Maryland, USA

Event Website: www.annapolisyc.com/racing

NOTICE OF RACE (with Amendment 1 in Blue Bold)

1 RULES

The regatta will be governed by the rules as defined in The Racing Rules of Sailing (RRS).

2 ADVERTISING

Boats will not be required to display advertising chosen and supplied by the organizing authority.

3 ELIGIBILITY

3.1 The One Design Course of this regatta is open to all boats of the J/105, J/80, **J/70**, J/30, and J/22 classes.

3.2 Any class that does not have a minimum of 6 entries by midnight on 9 June 2016 will not be eligible for a start and the entry fees will be returned.

4 CLASSIFICATION

There will be no sailor classification requirements beyond those stated in applicable class rules.

5 FEES AND ENTRY

5.1 Registration and entry fee of \$55.00 is due by 1700 on 9 June 2016. Entry fees paid before 1700 on 26 May 2016 will be discounted to \$45.00. Entry fees are non-refundable.

5.2 Boats wishing to enter shall register on line at www.annapolisyc.com/racing.

5.3 The entry fee includes racing and the awards ceremony after racing at the AYC Sailing Center.

5.4 To be considered an entry in the regatta, a boat shall complete all registration steps and pay all fees.

6 SCHEDULE

6.1 The event schedule will be:

Date	Time	
11 June 2016	1000	Rendezvous for One Design Classes at FL Y "A" (off Greenbury Point)
	1100	First warning signal for first race of the day
	1530	No warning signal will be made after this time
	After Racing	Competitor's party with complimentary beer and awards presentation at AYC Sailing Center

6.2 Multiple races are scheduled for each class.

7 MEASUREMENT AND INSPECTION

No pre-regatta measurements or inspections will be required.

8 SAILING INSTRUCTIONS

Sailing instructions will be available by 1700 on Monday, 16 May 2016. They will be posted on the event website.

9 VENUE

9.1 Attachment 1 shows the location of the racing area.

9.2 Attachment V shows the layout of the regatta venue.

10 THE COURSES

The courses to be sailed will be windward-leeward drop mark courses.

11 PENALTY SYSTEM

- 11.1 Penalties while racing: RRS 44.1, One-Turn and Two-Turns Penalties will apply.
- 11.2 Penalties after racing: RRS/US Appendix T, Section B (Post-Race Penalties) will apply.

12 SCORING

- 12.1 RRS Appendix A4, Low Point System, will apply.
- 12.2 One race is required to be completed to constitute a series.
- 12.3 A boat's series score will be the total of her race scores.

13 HAUL-OUT RESTRICTIONS

There will be no restrictions on haul-out.

14 RADIO COMMUNICATION

The race committee intends to make courtesy broadcasts to competitors on VHF radio. The specific channel will be stated in the sailing instructions.

15 PRIZES

- 15.1 Prizes will be given for 1st, 2nd, and 3rd place in each class.
- 15.2 Additional prizes may be awarded at the discretion of the organizing authority.

16 DISCLAIMER OF LIABILITY

Competitors participate in the regatta entirely at their own risk. See rule 4, Decision to Race. The organizing authority will not accept any liability for material damage or personal injury or death sustained in conjunction with or prior to, during, or after the regatta.

17 INSURANCE

Each participating boat shall be insured with valid third-party liability insurance with a minimum coverage of \$US 300,000 per event or the equivalent.

18 FURTHER INFORMATION

- 18.1 Guest privileges can be established on registration.
- 18.2 For more information contact:

AYC Regatta Manager: Linda Ambrose, lambrose@annapolisyc.org, 410.858.4964
Event Chair: Craig & Dotty Saunders, dottysaunders@verizon.net, (410) 570-0520

ATTACHMENT 1 - RACE AREA

